



LIVING LIFETIME PRODUCTION AWARD



*(Based on highest lifetime milk production with most recent
lactation completed in calendar year)*

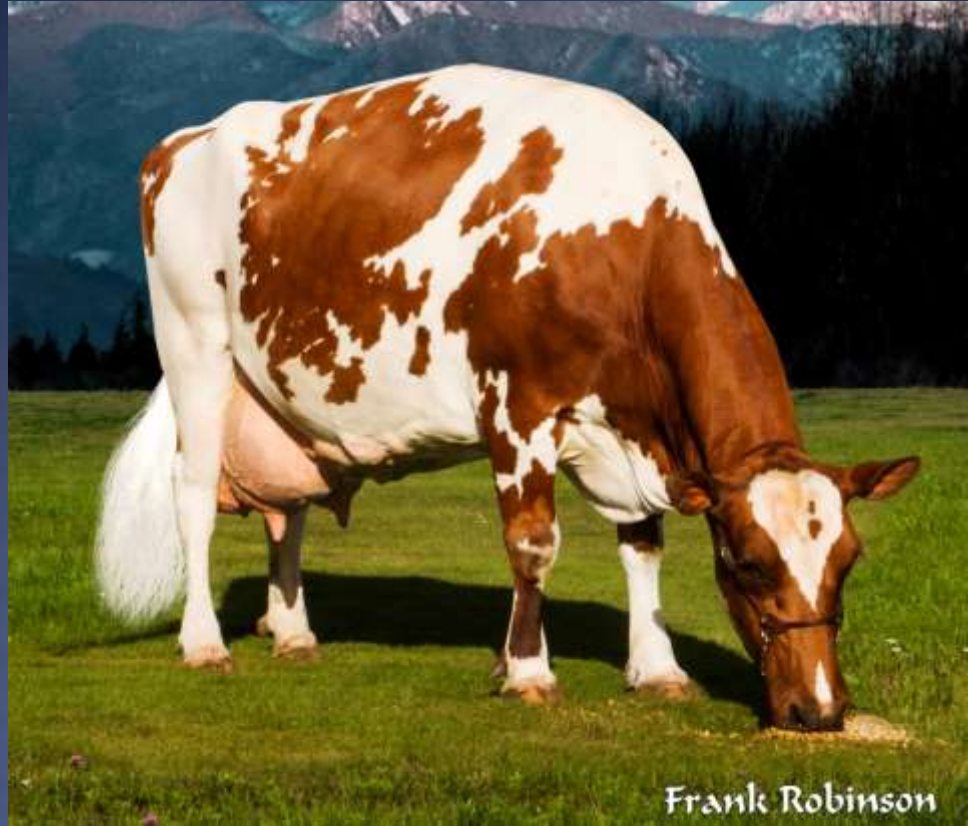
Family-Af-Ayr Kellogg Lacey, EX-94 5E

329,440M (149,433 kg) 11,059F 9,572P

Family Af-Ayr, IL



AYRSHIRE TROPHY AWARD



(Based on highest 305-day milk, 4% fat, record)

Mainstream Real Bethany, EX-93 2E

7-01 38,030M (17,250 kg) 4.7% 1795F 2.8% 1035P

Mark Kortus, WA



DECEMBER 2019 #1 HIGH CPI COW



Palmyra Burdette P Rayna-ET, EX-94

4-06 347D 29,710M (13,476 kg) 4.9% 1444F 3.3% 980P



DECEMBER 2018 #1 HIGH CPI COW



Palmyra Berkely P Ruth-ET, EX-94 2E

4-10 328D 29,420M (13,345 kg) 4.1% 1218F 3.1% 916P

2x World Dairy Expo Grand Champion

3x Unanimous All-American ~ Son in AI



INDEX FORMULA

The PTI & CPI formulas are based upon six traits with the following emphasis:

25% fat

35% protein

25% type

6% daughter pregnancy rate (DPR)

5% udder depth

4% somatic cell.

Milk yield is not included as a separate trait in the formula because it is highly correlated to protein and fat yields.



GRAND CHAMPION 2019 WORLD DAIRY EXPO



De La Plaine Bingo Stinger, EX-94 2E
4-03 365D 30,144M (13,673 kg) 4.3% 1298F 3.1% 935P

GRAND CHAMPION 2019 EASTERN STATES



De La Plaine Bingo Stinger, EX-94 2E
4-03 365D 30,144M (13,673 kg) 4.3% 1298F 3.1% 935P

GRAND CHAMPION 2019 MID-ATLANTIC NAT'L



Old-Bankston JC Bri's Bikini-ET, EX-94 3E

5-00 365D 29,627M (13,440 kg) 3.7% 1096F 3.2% 938P



GRAND CHAMPION 2019 SOUTHERN NAT'L



Bear-Ayr Burdette Ray, EX-94 2E

6-00 339D 31,240M (14,170 kg) 4.1% 1281F 3.1% 957P

BREED GOAL: INCREASING DATA COLLECTION

Partnership with Neogen for genomics testing

Neogen works collectively with other testing centers around the world. Results are supplied in user friendly formats and can be provided with PTI and LPI indexes.

The US Ayrshire Breeders Foundation is working hand-in-hand with the Association to seek financial support for increased testing.



BREED GOAL: INCREASING DATA COLLECTION

Four traits have been identified for every breeder to report that have significant economic impact and will provide relevance to the Ayrshire breed in a competitive US dairy industry:

- 1. Calving ease*
 - 2. Incidence of mastitis (not somatic cell)*
 - 3. All inseminations (not just the most recent)*
 - 4. Hoof care/lameness*
- 5. National Dairy Herd Improvement Association (DHIA) and the Council on Dairy Cattle Breeding (CDCB) are working with us to accurately identify and report Ayrshire cattle numbers and statistics across the US.*



ASSOCIATION GOAL: INCREASING EFFICIENCIES

The US Dairy Economy has suffered terribly over the last three years.

- 1. Low milk prices*
- 2. Drought in some regions and flooding in other regions resulted in decreased feed or poor feed availability*
- 3. Decreased prices for replacement stock*
- 4. Increase in number of dairies leaving industry*
- Result to Association - Decreased registrations and transfers. Counter measures include:*
 - 1. Increased cooperation with other dairy breed associations*
 - 2. Partnered with other Associations to create THE ANGLE publication*



ALL-AMERICAN CONTEST

Open Contest

140 Entries

17 States + Quebec

Junior Contest

82 Entries

15 States



SIGNS WE ARE MAKING PROGRESS

Increased Production

- Breed Avg 18,128M (8,223 kg) 4.0%F 3.2%P

Increased Genetic Gain

- The margin in PTA production values between AI and non AI bulls has almost doubled for milk, fat & protein

Semen Sales Stats

- Over last 10 years, domestic and international U.S. Ayrshire semen sales increased considerably

Young Sire Expansion As Result Of Increased Demand & Usage

- U.S. AI companies have increased line-up. We currently have 40 AI Young Sires available in the US.



YOUTH PROGRAMS

Record Book Contests

Scholarships

Ambassador Program

Quiz Bowl & Dairy Jeopardy

Display & Photography Contests

National Jr Shows

Jr All-American Contest

Internship Program



MORE INFORMATION
IS AVAILABLE

www.usayrshire.com

